



Public Notice

Information Regarding a Planned Redesign of the Intersection of Elm, Cherry and Austin Streets

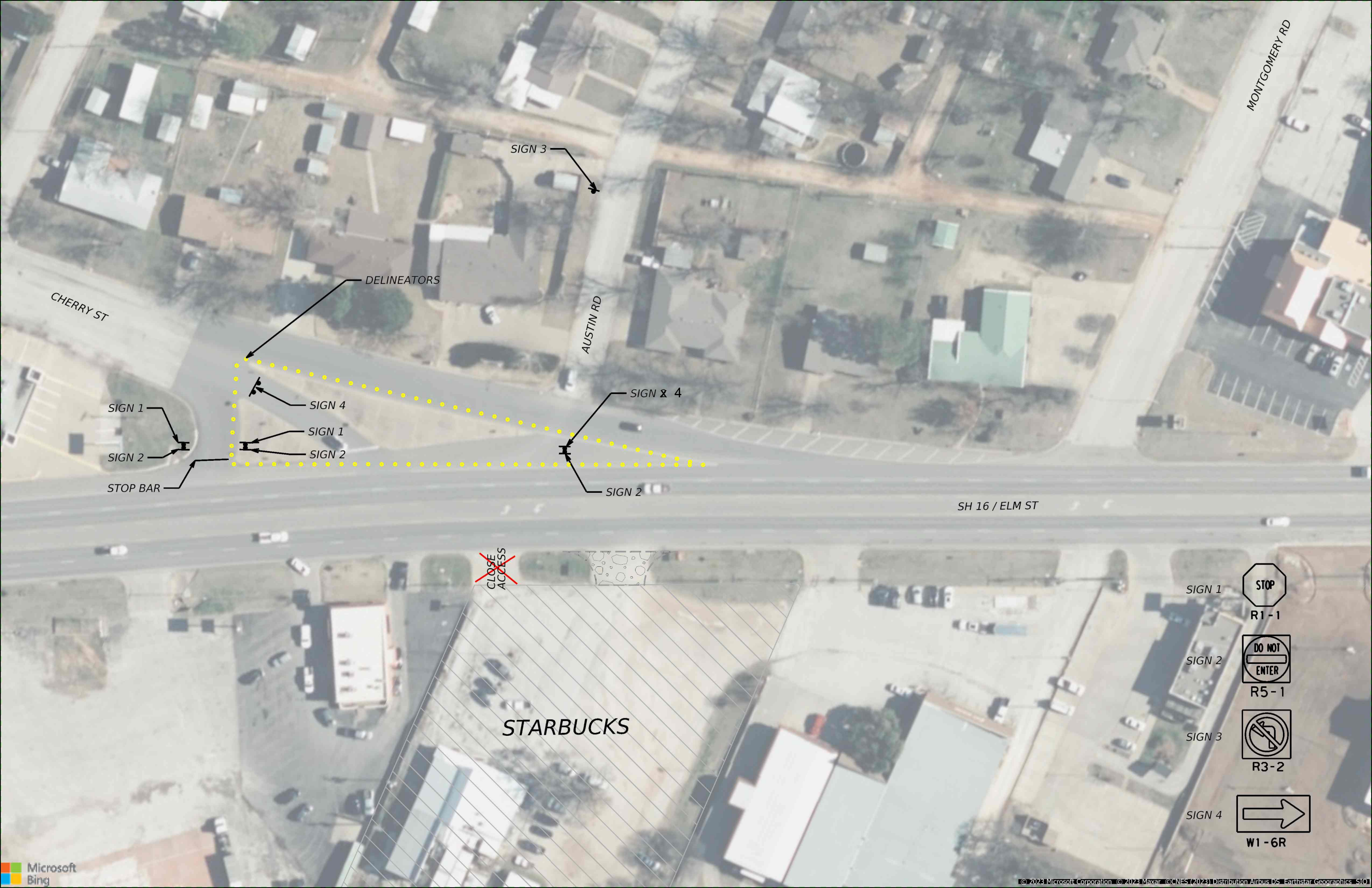
On October 26, 2023 the City Council unanimously voted to strongly recommend that the Texas Department of Transportation (TXDOT) initiate a project for the redesign of the Elm, Cherry, and Austin Streets intersection. The proposed redesign was extensively reviewed by the City's Transportation Improvements Committee and the Committee recommended that the Council approve the redesign.

A project timeline will be developed and a date will be established for the start of work on the project. Once completed, this project will change traffic patterns at this location. Of particular note, motorists will not be able to turn south on Cherry Street from Austin Street (please note, this type of turn is currently not allowed in the present configuration).

The City, in coordination with TXDOT, will provide notifications regarding the start date and completion date of the project.

A schematic of the approved design is provided as part of this Notice.

Questions regarding this project may be emailed to City Manager Eric Garretty, egarretty@grahamtexas.net.



CHERRY ST

MONTGOMERY RD

SIGN 3

DELINEATORS

AUSTIN RD

SIGN 1

SIGN 4

SIGN & 4

SIGN 2

SIGN 1

SIGN 2

SIGN 2

STOP BAR

SH 16 / ELM ST

~~CLOSE ACCESS~~

STARBUCKS

SIGN 1



R1-1

SIGN 2



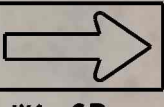
R5-1

SIGN 3



R3-2

SIGN 4



W1-6R